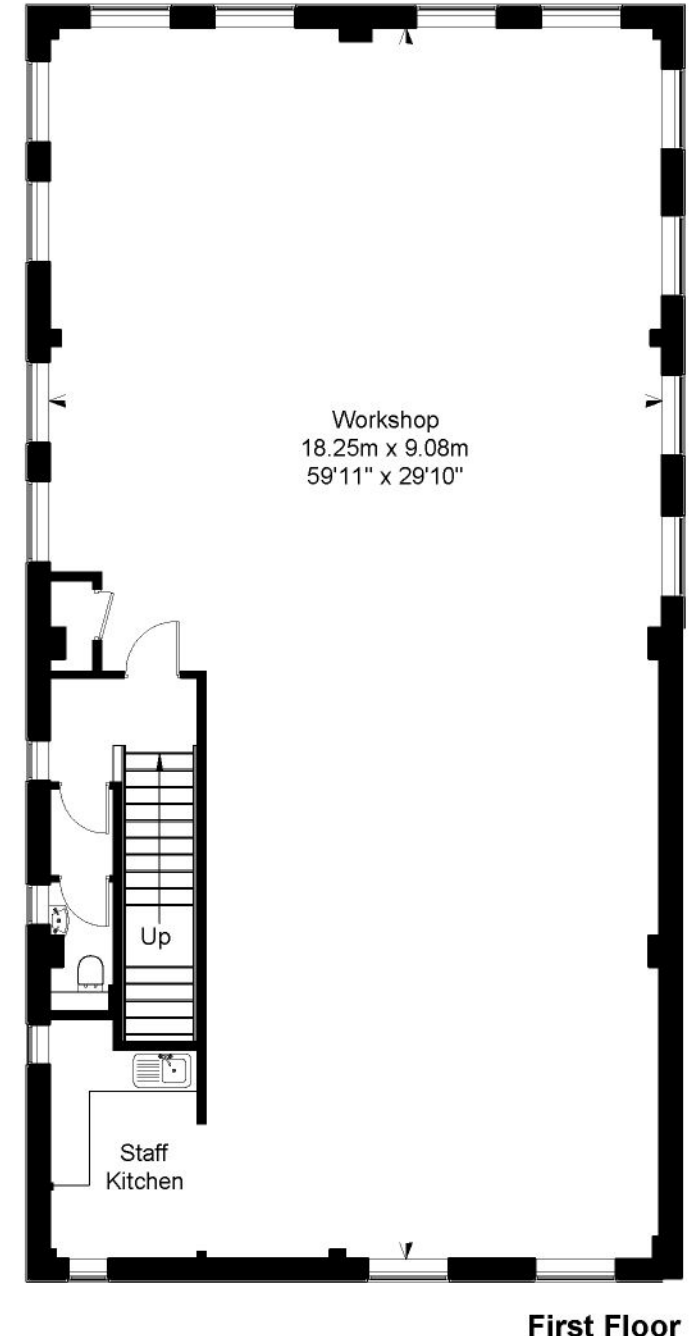
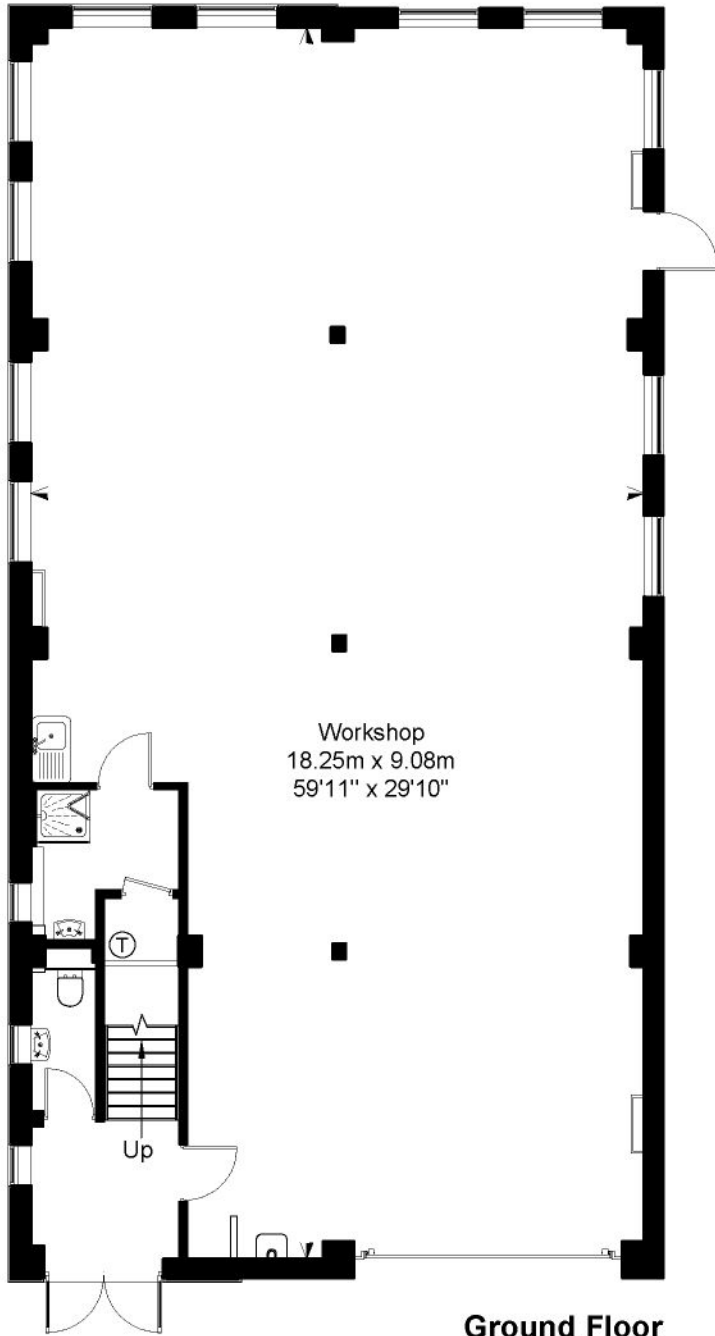


Unit A, Oakfield Industrial Estate, Eynsham, Oxfordshire

Approximate IPMS2 Floor Area 330 sq metres / 3552 sq feet



Simply Plans Ltd © 2022
07890 327 241
Job No SP2930

This plan is for identification and guidance purposes only.
Drawn in accordance with R.I.C.S guidelines.
Not to scale unless specified.
IPMS = International Property Measurement Standard